

Mvix



VIDEO WALLS

© Mvix, Inc. All rights reserved.

Upcoming Events >

24 April, 10am - 12pm

Opening Convocation

Every fall, new students process through the Van Winkle Gates and gather on the College Green to officially launch their Brown academic careers.

3-5-2022 5:00 PM

24 April, 1pm - 3pm

Family Weekend

Family Weekend provides students, parents and others the ideal autumnal setting for a reunion and exploration of Brown.

5-14-2022 5:00 PM

24 April, 1pm - 12am

Reunion Weekend

Featuring performances, receptions, forums, exhibits, Campus Dance and more, Reunion brings thousands of Brown alumni and families back to College Hill to reconnect.

4-26-2022 7:00 PM



Champion University



CAMPUS SAFETY

the night away at the annual Homecoming Dance on October 20th. Tickets go on sale next M



TABLE OF CONTENTS

- Features 4
- Video Wall Orientations 5
- What to Display 6
- How It Works 8
- Video Wall Components 9
- Case Study: Grounds for Sculpture 12
- Total Cost of Ownership 14



Features of the Mvix Video Wall



Easy to design and implement multi-screen layouts



Eliminate costs associated with printing new posters



Supports native 4k content for crisp visual quality



Show unique content for a more personalized digital experience



Includes over 150 content apps and data integrations



Hundreds of customizable templates to engage guests and members



Editable elements such as colors, fonts, and animations



Multi-zone screen layout to multiply content delivery



Manage remotely over the internet from anywhere



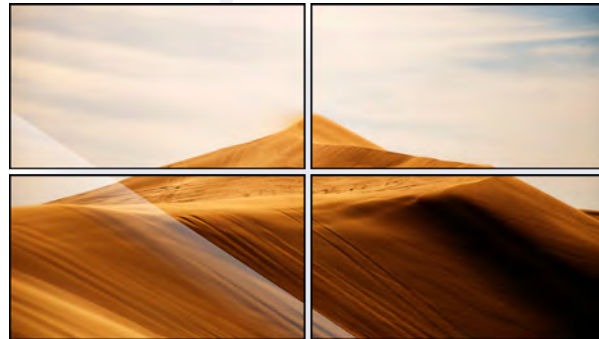
Managed from the same platform as traditional and interactive displays

Video Wall Orientations

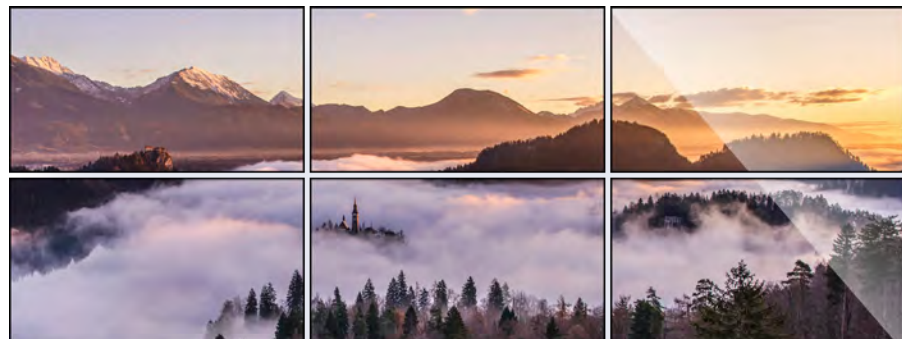
1 x 3



2 x 2



3 x 2



Mosaic



What to Display



4K Video and Images



Branded Content



Building Directories



KPI Dashboards



Promos and Announcements



Wayfinding



Advertising



Flight Information

How It Works



1. Install the Video Wall Player & Screens

The player connects to the Internet wirelessly or via an ethernet cable, and to the screens using an HDMI cable.



2. Create Content & Templates

The player connects to the Internet wirelessly or via an ethernet cable, and to the screens using an HDMI cable.



3. Publish Dynamic Content

Once the content is configured via the cloud software, the video wall player downloads and displays it on the video wall.



4. Update Content/Reschedule

Remote access to the software allows you to easily update your content and playback schedules, all from one login.

Video Wall Components



Display

Selecting the displays/screens are a critical aspect of building your video wall. The three questions to ask yourself about your displays are:

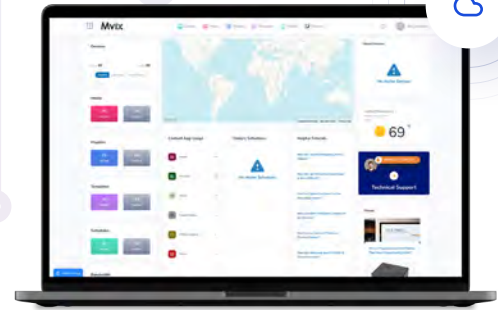
- What dimensions are appropriate for my space?
- Will my screens be placed outdoors or inside?
- Do I need commercial-grade quality with extended warranties?



Video Wall Player

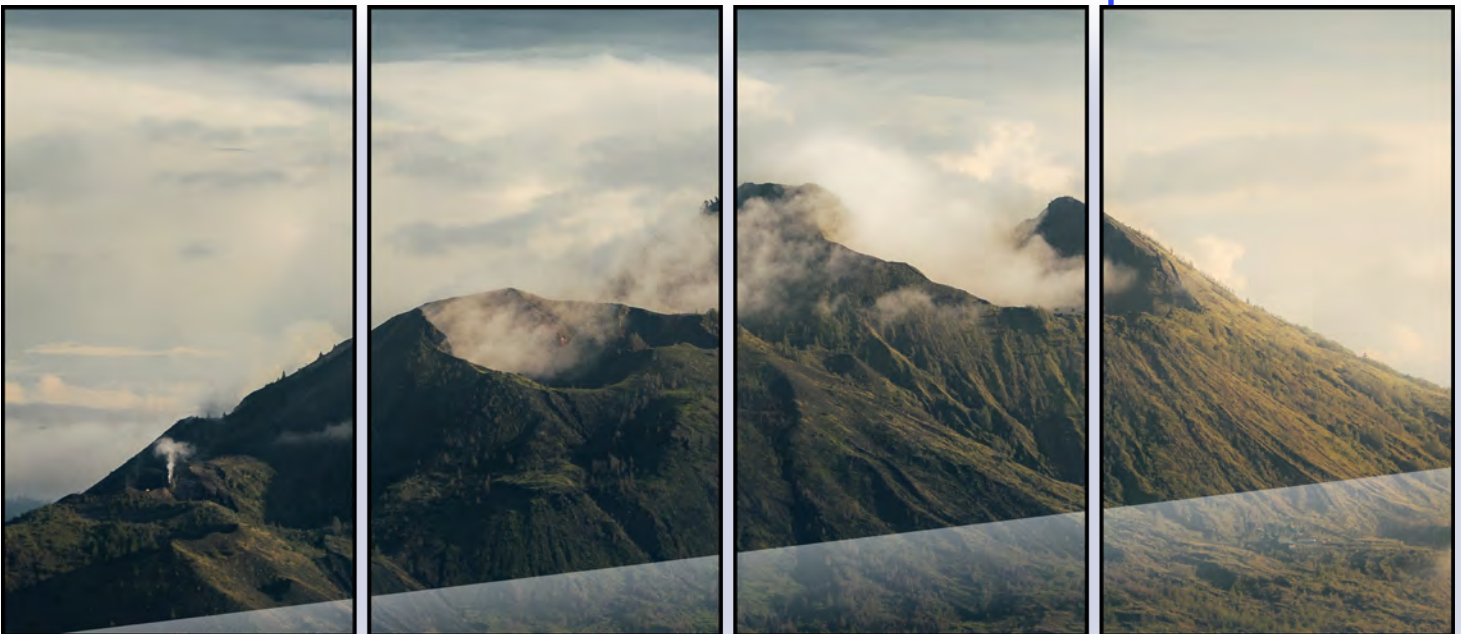
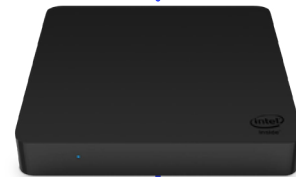
The media player is a small device that is connected to the displays via HDMI and to the Internet via Wi-Fi or a wired connection. It caches the content to be displayed on your video walls so your screens will never be blank, even when there is no internet connection.

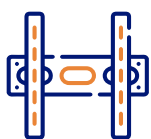




Content Management Software

Digital signage software, also known as the content management software (CMS) is the “back-end” where you create/upload your content, configure it, then deploy it to your screens. The software is often cloud-based and can be accessed online from a computer, allowing for remote content management.





Mounts

1. Mounting solutions have functional and aesthetic benefits. Naturally, you'll want to consider things such as cost, support, reputation for quality, and ease of installation when evaluating mounting solutions.
2. Video wall mounting systems are specially designed to offer slim, space-saving, and aesthetically appealing installation.
3. A pop-out mount will pop in and out with 8 point tool-less micro adjustments to ensure a clean and quick installation. Screens can be assembled and seamlessly aligned in minutes, with continued access for servicing and maintenance.



Enclosures

Enclosures complement and showcase your installation. Behind the scenes, the enclosures have a custom rack and offer space to put equipment such as a digital signage media player and cables. The enclosures are designed to be aesthetically pleasing, but also to provide ventilation, hide display bezels, expose power buttons, and make accessing video wall players and screens as easy as possible.

A Video Wall Case Study: Grounds for Sculpture

The Challenge

Grounds for Sculpture wanted an attractive way to promote upcoming events and display pricing for guests.

The Solution

A 4-screen video wall with 4K resolution was installed in their front lobby.

The Result

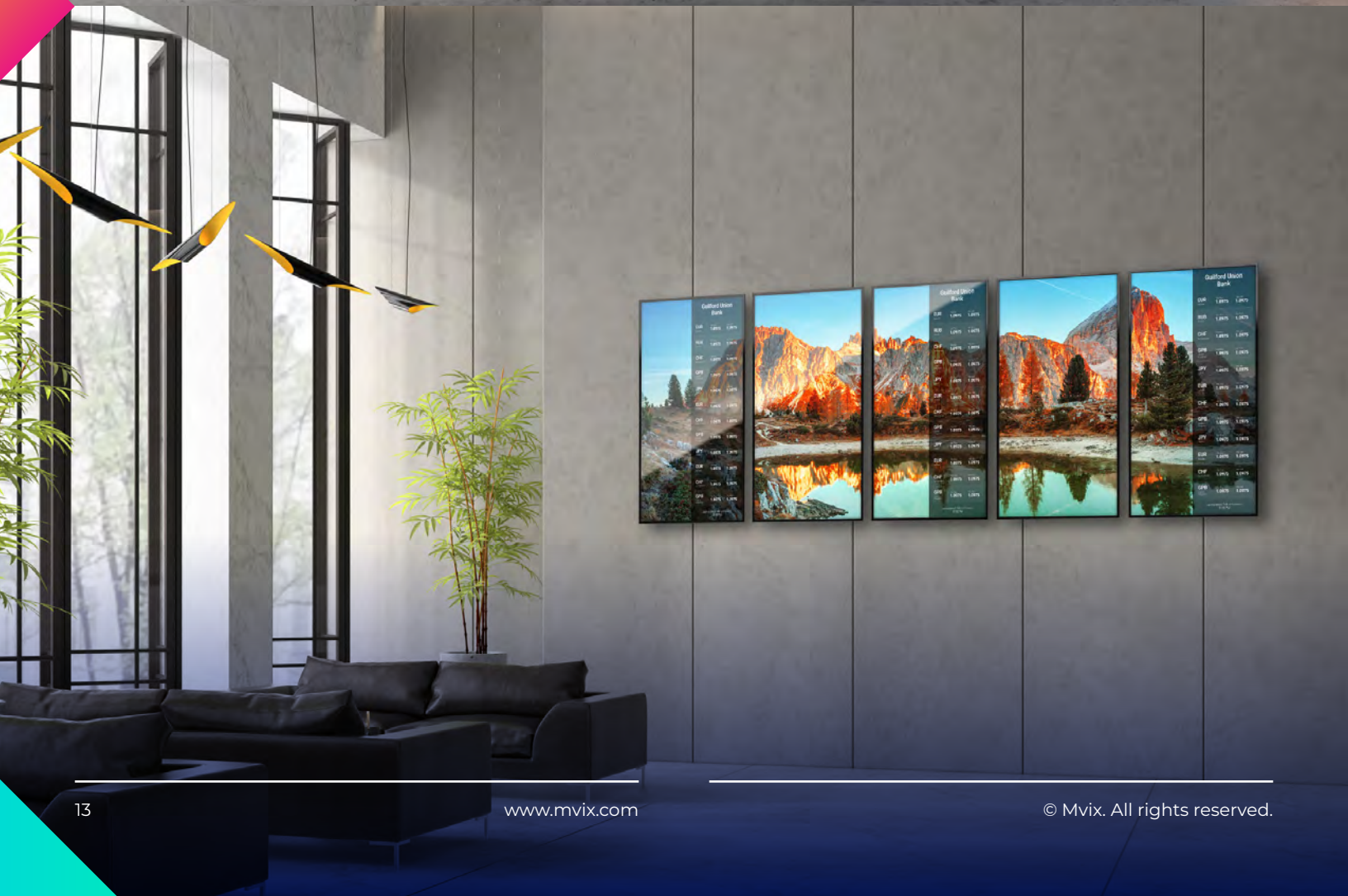
As a result of the video wall, the park noted faster ticketing and more interest in events.



“I think if everyone had Mvix digital signage, they’d have an elegant and finessed system.”

Keith Pyatt

Manager of Digital Media & Technology



Total Cost of Ownership



Cost of Hardware

The cost of hardware includes, screens, players, mounting and cabling will be your largest upfront expense. A strong recommendation is to get commercial-grade screens and players that are designed for long operating hours. They also come with full warranties.



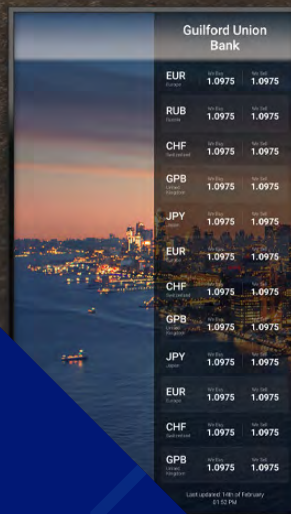
Cost of Content

This will be an ongoing cost that you can get from two sources: your company's design team / agency / freelancer can create the content OR you can select digital signage software that includes customizable content templates, feeds, or an app store. Remember to budget and schedule for the content to be updated regularly.



Cost of Installation/ Implementation

Will your video wall vendor provide turn-key service? i.e. install your video wall, ensure that it works in the current infrastructure, and deploy your content? Whether you have your vendor provide this service or elect to do it in-house, this is a cost that needs to be added to the budget to ensure a smooth roll out.



Guilford Union Bank		
EUR	1.0975	1.0975
RUB	1.0975	1.0975
CHF	1.0975	1.0975
GBP	1.0975	1.0975
JPY	1.0975	1.0975
EUR	1.0975	1.0975
CHF	1.0975	1.0975
GBP	1.0975	1.0975
JPY	1.0975	1.0975
EUR	1.0975	1.0975
CHF	1.0975	1.0975
GBP	1.0975	1.0975

Last updated 10th of February 01:52 PM





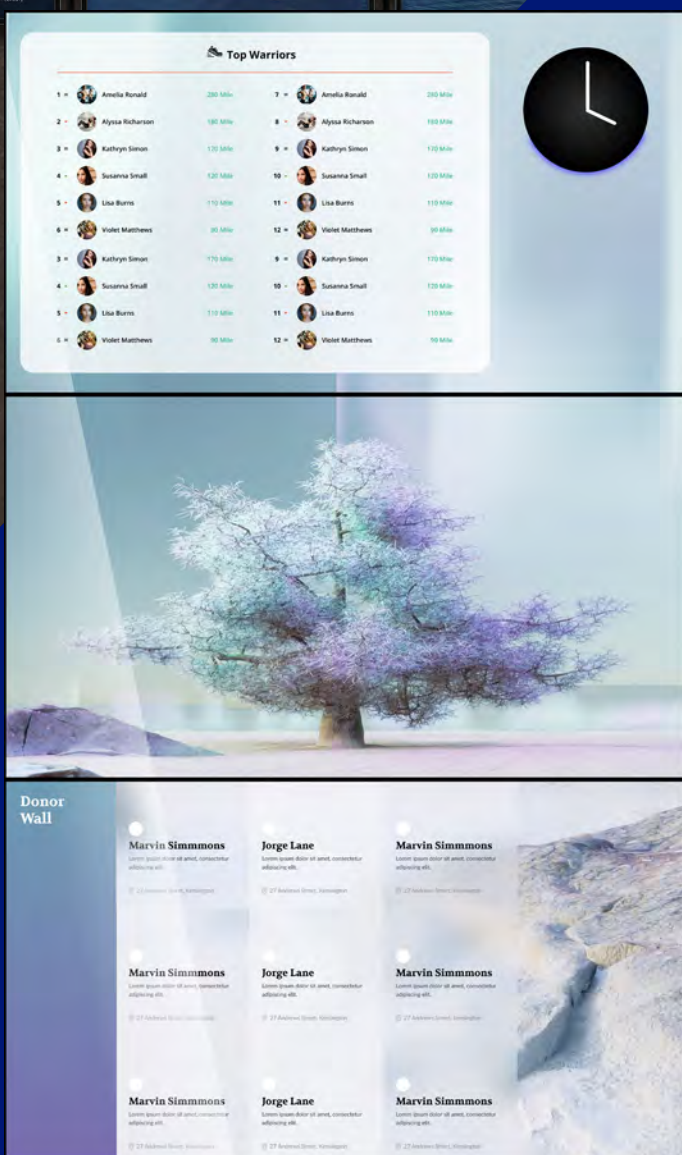
Ongoing Support and Training

Reputable video wall providers will include service and support in your estimate. Be clear on the SLAs and have a plan in place of action. If this is an internal resource, calculate what percentage of their time will be allocated to troubleshooting and on-boarding new internal resources to the digital signage workflow.



Capex or Opex?

What type of pricing model works best for you? Getting a subscription will spread the cost out over time. Conversely, a one time purchase may be easier even though the initial cost is higher.





23475 Rock Haven Way
Suite 125 Sterling, VA 20166 (USA)



+1 866 310 4923
+1 703 382 1739



www.mvix.com



info@mvix.com